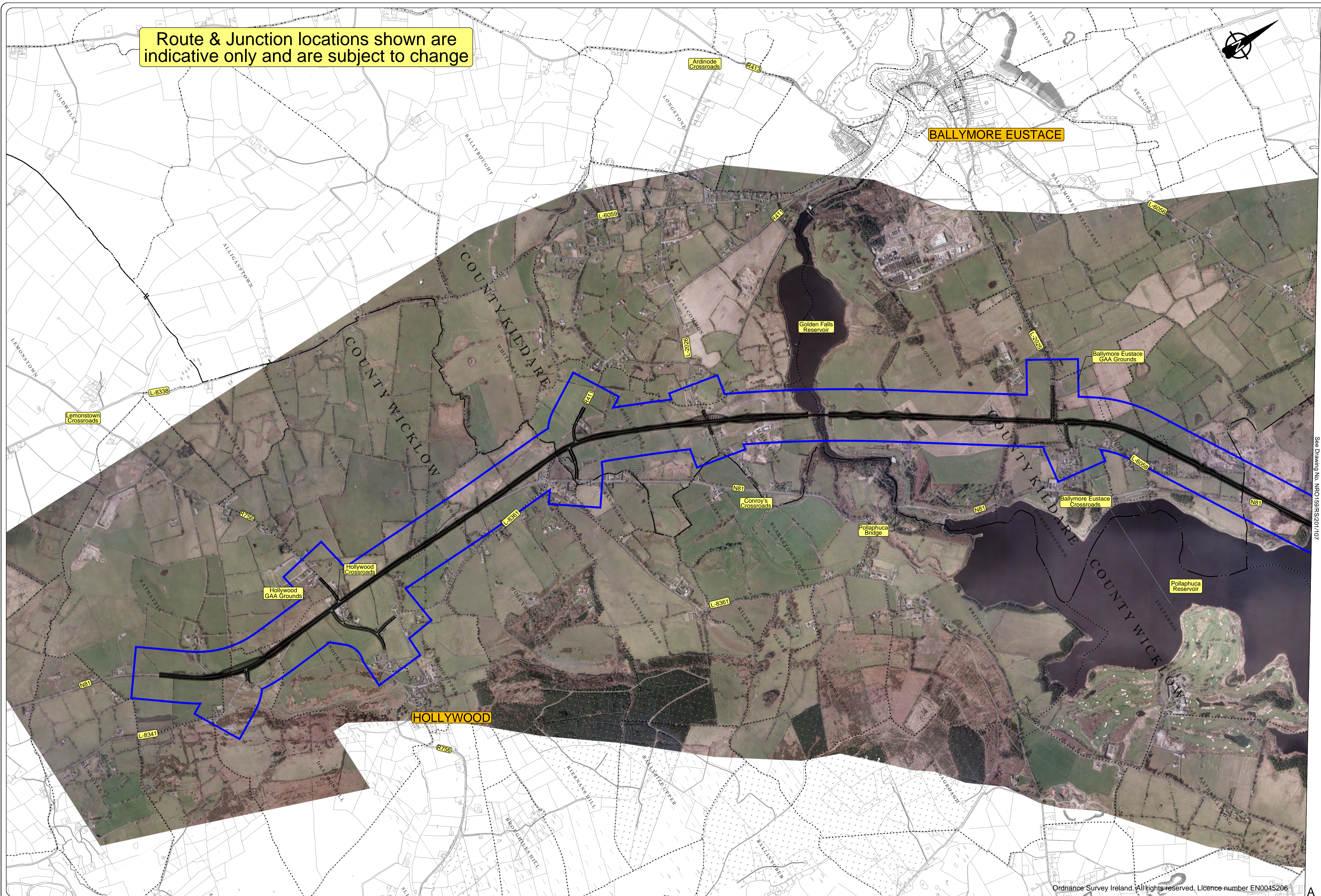


Route & Junction locations shown are indicative only and are subject to change



See Drawing No. NRO159/RS/201/107

Ordnance Survey Ireland. All rights reserved. Licence number EN0045206

Plan

Legend:

Preferred Route Corridor

Kildare County Council

National Roads Design Office

Maudlin, Naas, Co. Kildare, Ireland
Tel: +353-45-898199, Fax: +353-45-875845, e-mail: kcc@kildaremro.com

MICHAEL O' LEARY
ACTING DIRECTOR OF SERVICES
Transportation & Public Safety

DAVID O' GRADY BE MSc HDip CEng MIEI
ACTING SENIOR ENGINEER

Suffix	Initials	Date	Description
1		Feb. '12	Initial Issue
REVISIONS			

STAGE

PRELIMINARY

N.R.A. APPROVAL

TENDER

CONTRACT

PROJECT N81 Hollywood Cross to Tallaght Road Improvement Scheme

DRAWING Public Consultation Preferred Route Corridor

SHEET 1 - 4

Filename: N:\Projects\NRO159\Drawings\200RS\201 Dwg.No. NRO159/RS/201/106

Scale: 1:10,000 @ A1

Date: Feb. 2012

Drawn by: B.K.

Checked: A.K.

Revision: